



Haymeadow Lane, Burghill, Hereford

Guide Price £495,000

🛏️ 3 🚿 2 🚗 3

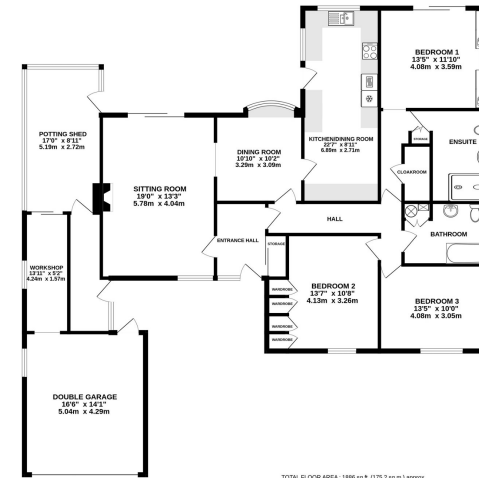


- Spacious Detached Bungalow
- Generous Wrap-Around Gardens
- Driveway & Double Garage
- 3 Double Bedrooms + Ensuite
- Popular North Hereford Village Location
- Potting Shed & Workshop





GROUND FLOOR



TOTAL FLOOR AREA: 1880 sq. ft. (175.2 sq. m.) approx.
MSA only applies to the main levels of the building. The area of the roof is not included in the total floor area. The area of the ground floor is not included in the total floor area. The area of the ground floor is not included in the total floor area. The area of the ground floor is not included in the total floor area.

A Spacious Detached 3 Double Bedroom Bungalow, located in the picturesque village of Burghill near Hereford, with wrap-around gardens, double garage and over 1,800 sq. ft total floor space.

This well-presented bungalow offers an exceptional opportunity to enjoy spacious and modern living in the sought-after village of Burghill. With its blend of comfortable modernised interiors, extensive gardens and convenient location, Haymeadow Lane is an ideal home for those seeking a peaceful yet connected lifestyle. The property boasts three double bedrooms, offering comfortable and flexible living spaces ideal for families or those seeking single-storey living.

